

PS/2 Contoured Keyboard™ Family

Where unbelievable productivity and comfort go hand in hand!



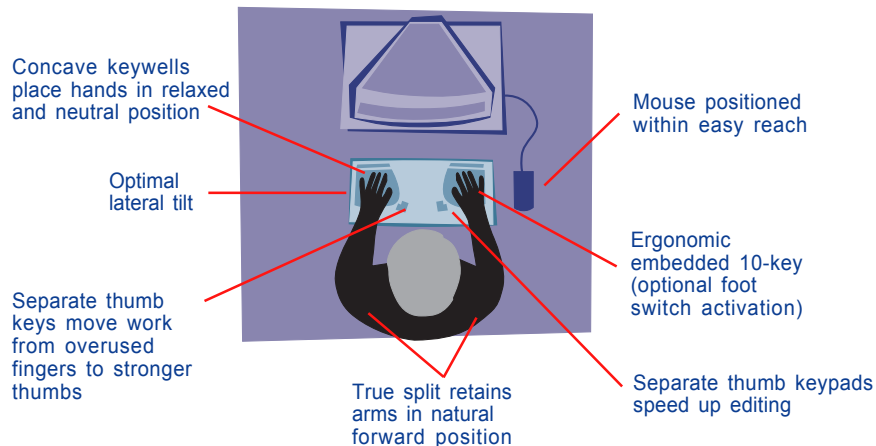
A More Comfortable & Productive Design...

The Kinesis® *Contoured Keyboard* family is based on a unique, patented design that minimizes the pain and strain typists experience from heavy use of traditional computer keyboards. Yet productivity is greater than with any other keyboard, leading to its popularity with programmers and medical transcriptionists.

This ergonomic design resulted from almost two years of research and testing and has proven itself in more than ten years of commercial use. Kinesis keyboards are prescribed by physicians and placed by therapists dealing with keyboard-related overuse injuries.

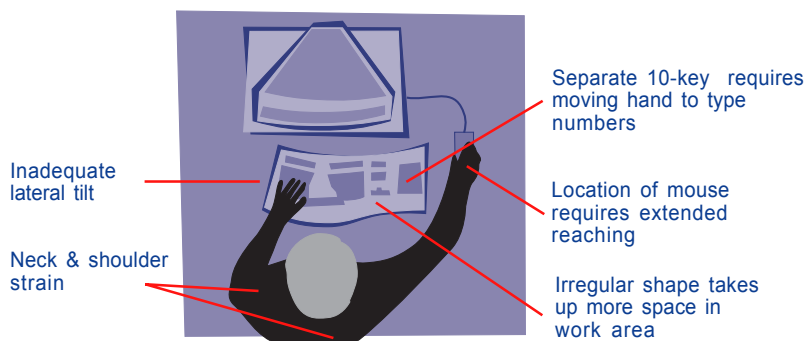
THE KINESIS CONTOURED KEYBOARD

Symmetrical alignment of body, keyboard, and monitor



THE ALTERNATIVE

Awkward alignment of user, keyboard, mouse, and monitor



Keyboard Models...

The Essential™ (KB132PC)

- Proven ergonomic design. The most advanced feature set, at the lowest price.
- Set key repeat rate from the keyboard.
- Foot switches. Supports up to three single action or one triple action foot switch to activate numeric keypad and perform "Shift" and "Keypad Enter".
- Available in White only.

The Classic (KB133PC-wht, KB133PC-blk)

Additional Features Include:

- On-board programmability to reduce strain and repetitive typing (unlimited remapping; 24, 36 or 48 macros up to 55 characters).
- Customize optional foot switches to perform any three key actions and/or macros.
- QWERTY/Dvorak switchable.

The Professional (KB134PC-wht, KB134PC-blk)

Additional Features Include:

- Single action foot switch (AC005FS) included.
- Second memory chip for longer macros (up to 140 characters).
- Memory locking switch protects users or managers against accidental or unauthorized programming of the keyboard.

KINESIS
COMPUTER ERGONOMICS

PS/2 Contoured Keyboard™ Family



Essential - White Only



Classic - White & Black



Professional - White & Black

Specifications & Special Versions*

Included Accessories

- Palm pads
- User's Manual
- Adaptation materials

Compatibility

- Most PS/2 systems, including Linux & Windows® 95/98/2000, ME, NT & XP compatible (includes Windows key actions).
- For USB, purchase the Advantage line of Contoured Keyboards.
- For Sun, refer to Interface II for Sun.
- Compatible with most non-PC PS/2 systems.

Dimensions

- Height: 3"
- Width: 16.5"
- Depth front-to-back: 8"
- Lateral tilt: ~20°

Mechanical Key Switches

- Tactile, silent/click selectable
- Operating force: 1.59oz
- Pre-travel: .083 in.
- Travel: .160 in.
- Rated Life: 50 million operations

Warranty, Upgrades & Technical Support

- Two-year limited warranty on keyboards.
- Any recent model can be upgraded to another. Upgrades performed at the Kinesis factory with two-day turnaround. Some models can be field upgraded (please inquire).
- Technical support is free except for normal long distance charges

Dvorak Legended Keyboards

QWERTY/Dvorak QD™ Dual Legends

(KB133PC/QD-wht, KB134PC/QD-wht)

- Keys have dual legends for both QWERTY and Dvorak typists.
- Keyboards retain macros after switching between QWERTY and Dvorak.
- Available in white only.

Selected Accessories

Foot Switches All contoured keyboards accept single (AC005FS) or triple (AC005TAF) action foot switches. Optional "splitter" (AC011FS3) allows up to three single action foot switches at once. Ideal for 10-key work. First foot switch action activates the 10-key until it is released. The second and third foot switch actions perform "Shift" and "Keypad Enter." Programmable keyboards allow foot switches to produce any key action or macro.

Solution™ Platform Systems Designed specifically for Kinesis keyboards, our *Solution* platform system incorporates an elegant, ultra thin keyboard tray (26 or 30 inch tray lengths) attached to a 22 inch or 17 inch fully adjustable arm. The platform slides on a ball bearing track and stores conveniently underneath desk when not in use.

Cirque Cruise Cat™, Smart Cat™ & Easy Cat™ These touchpad pointing devices fit perfectly on the center top portion of contoured keyboards. This is a convenient alternative to locating the touch pad to either side of the keyboard. Available for both PS/2 & USB versions.

Kinesis Interface II for Sun (AC015PS) Connects a PS/2 compatible mouse and/or a SUN mouse and one keyboard to a SUN Microsystems workstation, using the 8-pin minidin connector. Compatible with all PS/2 Contoured Keyboards.



www.kinesis-ergo.com
800-454-6374

KINESIS CORPORATION
22121 17th Avenue S.E., Suite 112
Bothell, WA 98021-7404 USA
Phone: 425.402.8100
Fax: 425.402.8181
email: sales@kinesis-ergo.com

*Features & specifications subject to change without notice.

Copyright 2003, Kinesis Corporation. All rights reserved. Protected by U.S. Patents: Des. 370,669; 5,610,602; 6,005,496; 5,689,253 and 5,673,040. Other US and International patents issued and/or pending. Specifications subject to change without notice. Kinesis is a registered trademark and the *Contoured Keyboard*, *Essential*, and *QD* are trademarks of Kinesis Corporation. *Windows*, *Cirque* and *Sun* are trademarks of Microsoft Corporation, *Cirque Corporation* and *Sun Microsystems*, respectively. Kinesis keyboards should be used in accordance with established ergonomic guidelines. Because of the complex set of factors believed to contribute to computer-related injuries, Kinesis can make no warranty that its products alone prevent or cure any physical ailment.