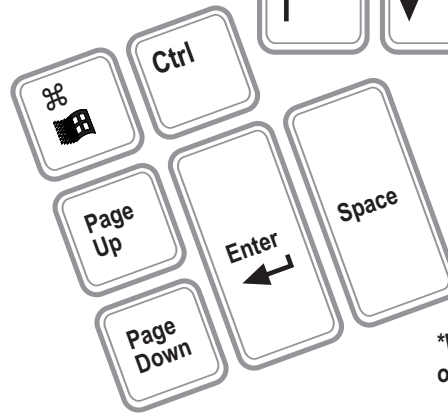
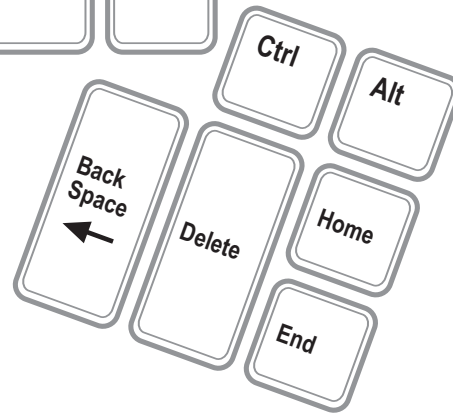
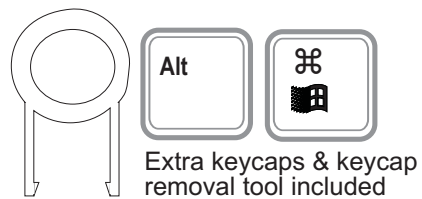
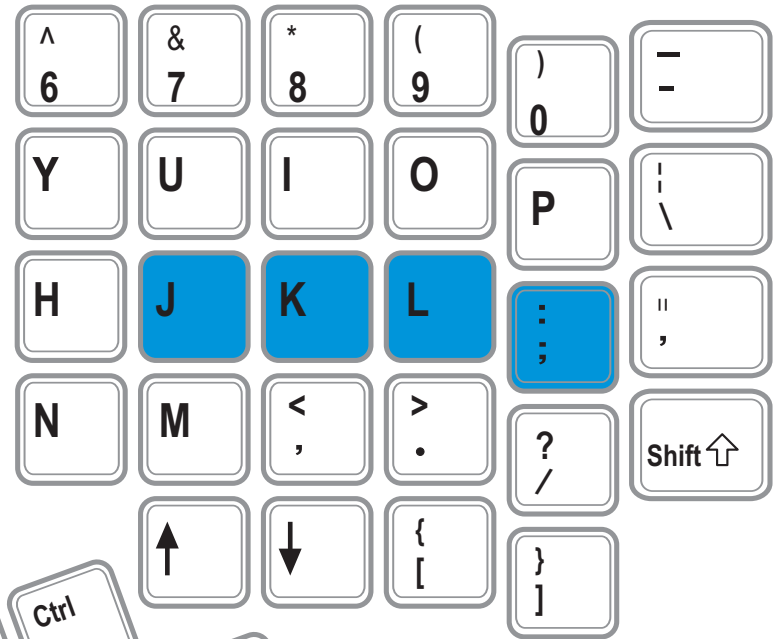
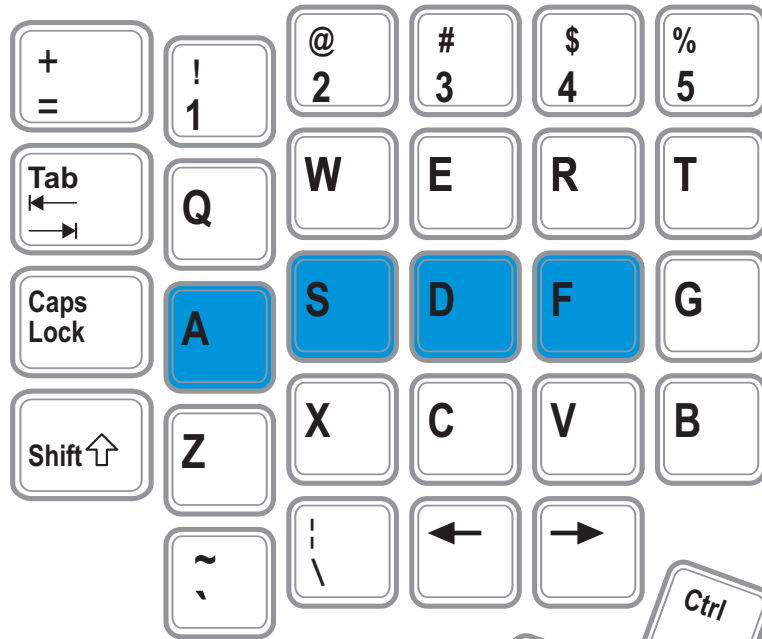


Kinesis Advantage keyboard, U.S. Default layout#

Blue home row keys are special “cupped” keycaps to aid finger positioning without looking. Embedded key actions are legended on front of keys, shown on separate graphic.

Thumb keys top row configured in “Windows Mode” Instant Configuration setting =w



DEFAULT FOOT SWITCH ACTIONS:*



*With optional single foot switch (FS007RJ11) or **triple foot switch (FS007TAF)